



## COMPANY PROFILE



**DRAIN JETTING**



**UTILITY LOCATING**



**VACUUM EXCAVATION**



**PROJECT MANAGEMENT**



**0459 803 321**

[www.eveservices.com.au](http://www.eveservices.com.au)





# VACUUM EXCAVATION

DRAIN JETTING - VACUUM LOADING - NDD



EVE Services Pty. Ltd. operate a fleet of modern vacuum excavation and Jetter trucks, fitted with full hydraulic booms and remote operation. Our trucks are kept to the highest standard, working on Civil, Council and Rail sites across South-East Queensland. Our operators are highly skilled in Plant operation and Utility investigation with years of industry experience.



## 8000L VERMEER MEGA VAC

6" BOOM,  
45m HOSING  
27"hg SUCTION - 2000CFM  
FV500 TRUCK



## 7000L VTI JETTER COMBO

5" BOOM,  
1" 257Lpm @2800PSI JETTER  
23"hg SUCTION - 1800CFM



## 6300L VTI HERCULES

5" BOOM,  
23"hg SUCTION - 1800CFM



## 4500L 4x4 VERMEER

4" BOOM,  
FULL 4x4 OFFROAD VEHICLE  
16"hg SUCTION - 1600CFM



## 1000L TRAILER VAC

4" BOOM,  
CAR TOWABLE





# UTILITY LOCATING

GPR – GNSS MAPPING – SURVEY OVERLAYS



EVE Services Pty. Ltd. is a fully certified CERTLOC (prev. BYDA) locating organisation with a team of qualified locators. Our team operate the latest EMF locating equipment, GPR units and GNSS survey rovers to deliver fast and reliable subsurface locating to suit a variety of budgets and requirements. The shift to subsurface 3D modelling and CAD verification on most infrastructure projects has seen a change in locating data collected. EVE's focus is on data quality and useability for our clients with the additional of GNSS survey on each site we locate.



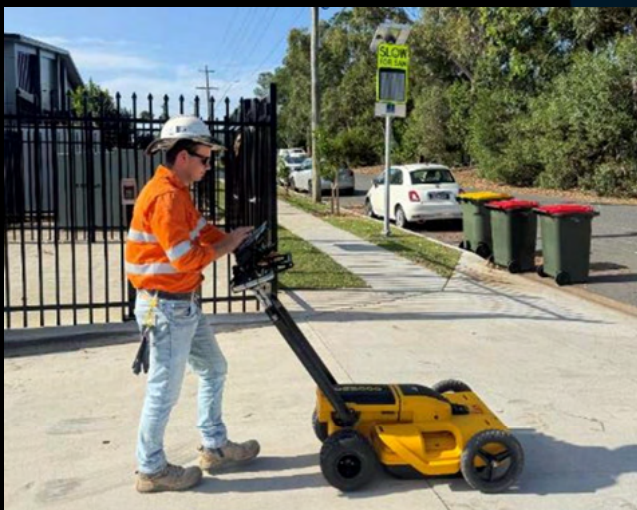
SITE LOCATING – MARKS ON SITE

UTILITY REPORTING – UTILITY MAPS

SURVEY OVERLAY – 2D & 3D MODELING

EVE services' staff have over 25years combined experience in the civil engineering and utility industries with a focus on providing accurate, fast and reliable utility locating data for our clients. With experience across both public and private sectors, EVE Services understands the importance of capturing and supplying data on time. This enables the design phase to derisk utility clashes during construction, ultimately saving on time and cost for projects.

As no project is the same, EVE Services works with its clients to establish core deliverables tailored specific to the project. Whether utility locating in rural or urbanised environments, EVE Services has extensive experience and operational strategies to minimise disruptions to stakeholders while completing works.



GPR scanning using IDS Opera Duo

At EVE Services we undertake our service locating in accordance with Australian Standard AS5488, locating services include:

- Potholing
- EMF wandling, trace rodding and sonde location
- GPR scanning
- Utility Reports
- GNSS pickups
- Survey overlays and georeferenced CAD files
- Sewer and stormwater manhole inspections



# PROJECT MANAGEMENT

EXCAVATION - PUP INVESTIGATIONS - ENVIRONMENTAL



EVE Services Pty. Ltd. is a locating company with project management at its core. We are diverse with our knowledge and experience and provide tailored solutions for our clients in both the public and private sector.

Some of these services include:

- **PUP investigations** (Public, Utility and Plant) – Traffic control and permit organisation, early works locating, tailored potholing programs and survey data processing
- **Utility verification** – Pre-earthworks potholing and trenching
- **Environmental services** – Drill mud disposal, high pressure water blasting and culvert cleaning, drainage water management plans
- **Vacuuming loading** – Hazardous waste disposal and management programs
- **Confined space** – culverts and pipework cleaning, retention tank cleaning, deep excavation water management



Confined space culvert cleaning and CCTV Inspection



Costco North Lakes – Concrete cutting, and Potholing



Somerset Dam - GPR scanning and drill mud excavation

Newstead lakes – Maintenance cleaning and vacuum loading



**DRAIN JETTING**



**UTILITY LOCATING**



**VACUUM EXCAVATION**



**PROJECT MANAGEMENT**



**0459 803 321**

[www.eveservices.com.au](http://www.eveservices.com.au)